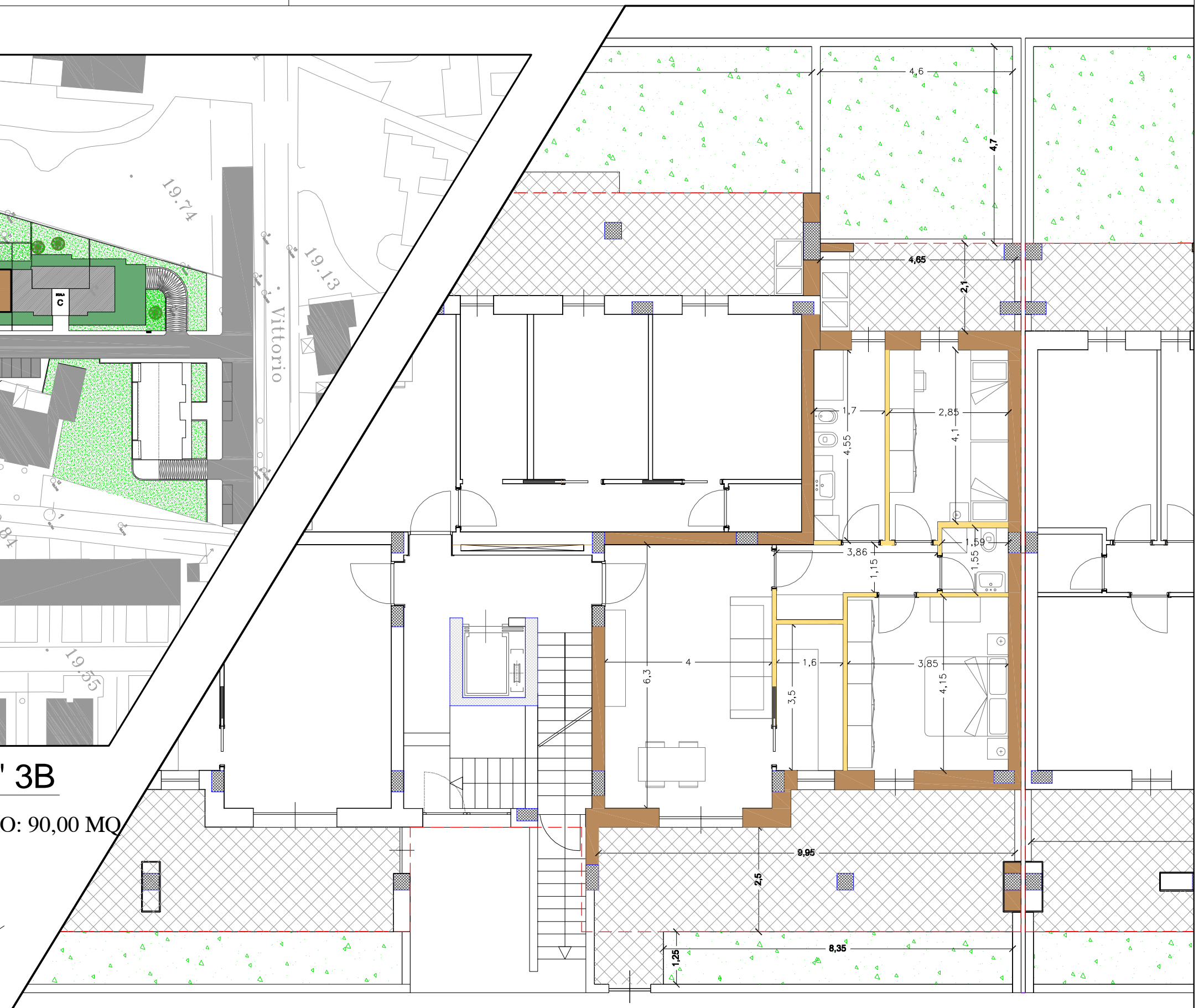
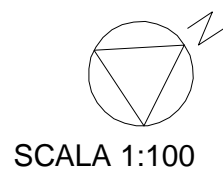


PIANO TERRA - UNITA' 3B

SUP. COMMERCIALE APPARTAMENTO: 90,00 MQ

SUP. VERANDE: 42,00 MQ

SUP. GIARDINO: 39,00 MQ



Uffici vendite: Castellana Grotte, via Conversano,123 - Monopoli, Piazza Vittorio Emanuele, 65

Tel. 080.4962743 / 080.6983441

email: spinosacostruzioni2018@gmail.com / web: www.spinosacostruzionisrl.it